

Marshallese Alphabet

a, ā, b, d, e, i, j, k, l, ḷ, m, ṁ, n, ŋ, ñ, o,
ō, ō, p, r, t, u, ū, w

Lori Phillips, EdD



P R E L

Published by Pacific Resources for Education and Learning (PREL)

900 Fort Street Mall, Suite 1300 • Honolulu, Hawai'i 96813

Toll free: (1-800) 377-4773 • Phone: (808) 441-1300 • Fax: (808) 441-1385

Email: askprel@prel.org • Website: www.prel.org



Distributed by Bess Press

3565 Harding Avenue • Honolulu, Hawai'i 96816

Toll free: (1-800) 910-2377 • Phone: (808) 734-7159 • Fax: (808) 732-3627

Email: info@besspress.com • Website: www.besspress.com

Cover design by Carol Colbath

Copyright © 2004 by PREL

Library of Congress Cataloging-in-Publication Data

Marshallese alphabet / Lori Phillips.

p. cm.

Includes illustrations.

ISBN 1-57306-221-9

1. Marshallese language - Alphabet -
Juvenile literature. I. Pacific Resources
for Education and Learning. II. Title.

PL6255.P32 2004 499.5-dc21

This product was funded by the U.S. Department of Education (U.S. ED) under the Regional Educational Laboratory program, award number ED01CO0014. The content does not necessarily reflect the views of the U.S. ED or any other agency of the U.S. government.

This book is part of the *Island Alphabet Books* series, which features languages and children's artwork from the U.S.-affiliated Pacific. Each book contains the complete alphabet for the language, four or five examples for each letter, and a word list with English translations. The series is published by PREL, a non-profit corporation that works collaboratively with school systems to enhance education across the Pacific.

*Special thanks to the following people and organizations
for their patience and enthusiastic support of this project:*

Palama Settlement ICT Learning Center

National Endowment for the Arts

Tom Barlow, Karen Ehrhorn, Kay Fukuda, Nancy Lane, Lee Noto,

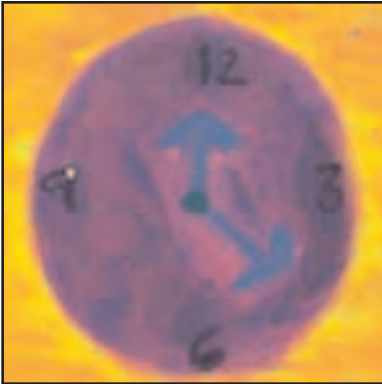
Mary Dodd Pearson, and Ludwig David van Broekhuizen
of Pacific Resources for Educational and Learning (PREL)

Celina Shetana and John Sullivan of Digital Majic

This alphabet book has been reviewed by:

Cheta N. Anien, Marshallese Language Arts Specialist
Republic of the Marshall Islands Ministry of Education

Hilda Heine, PREL Scholar
Pacific Resources for Education and Learning



awa



addi-lep



at



aolōk

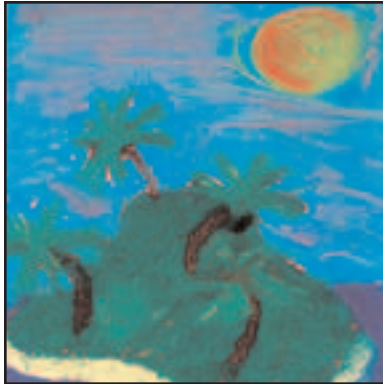


Aa

a!



āt



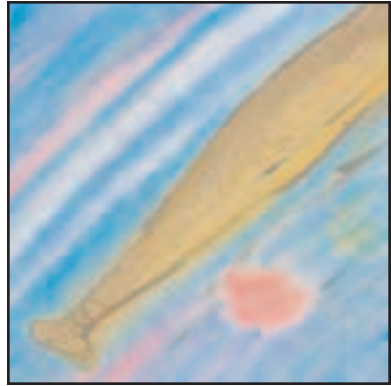
āne



Āā
ānbwin



boṭi



bōtta

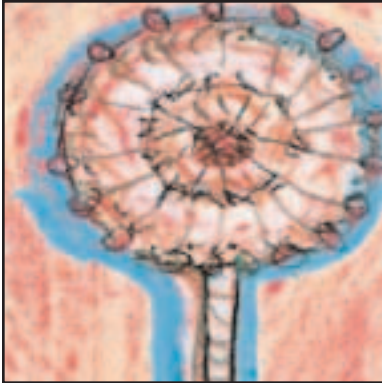


baj

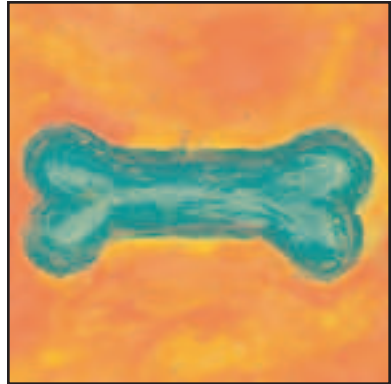


Bb

baru



deel



di

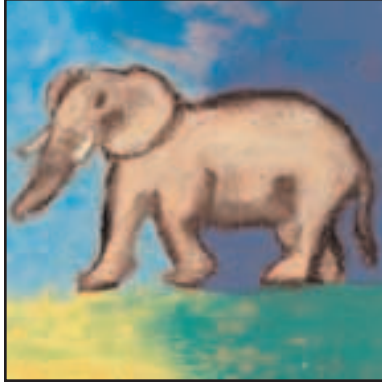


dāp



Dd

dak



eḷbōn



eḷ



Ee

ek



iju



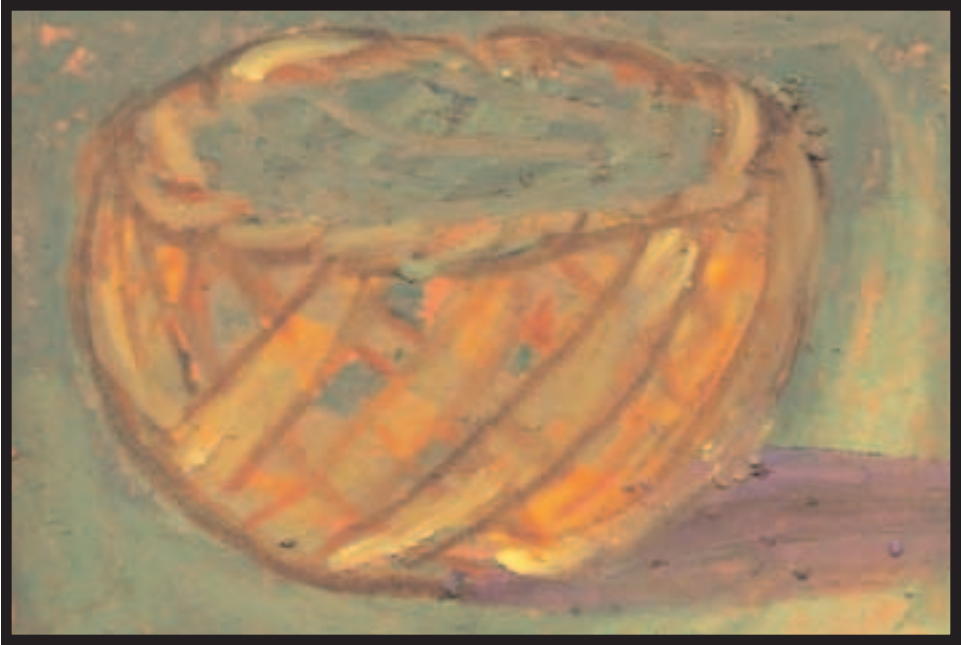
ine



iaa



iaraj



Ii

iep



jibōr



jijej



jaam



jidpān



Jj
jeļo



kwōdeak



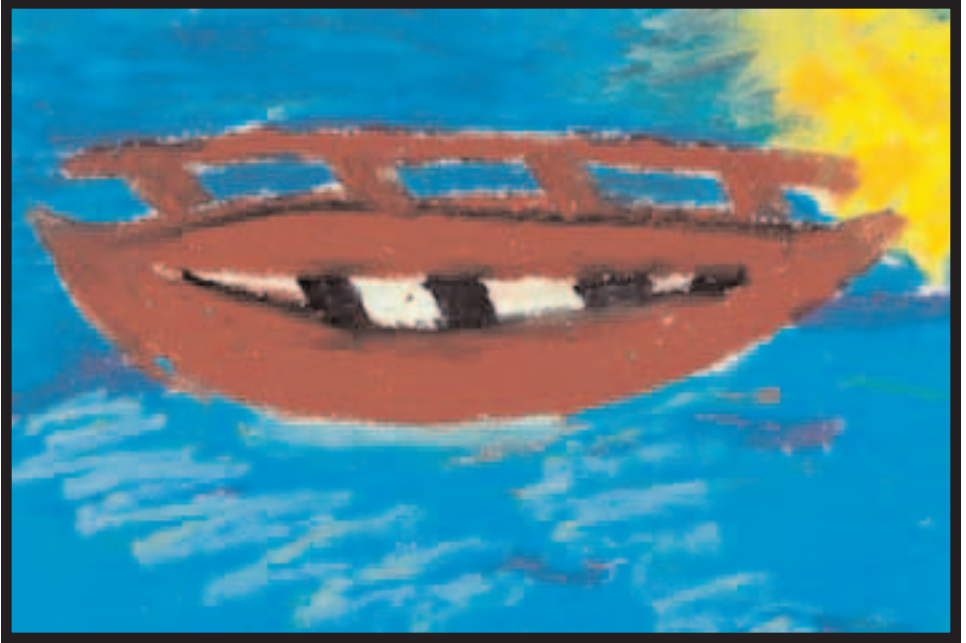
kweet



keinabbu

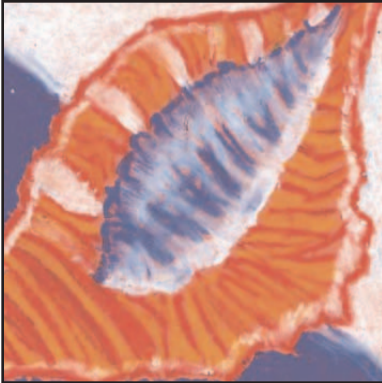


kidu



Kk

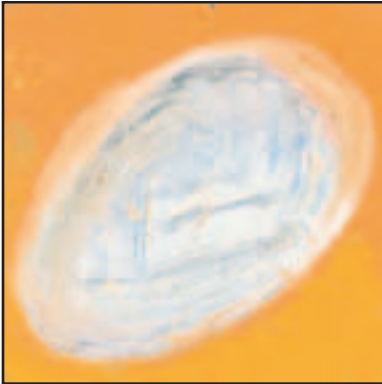
kōrkōr



libbukwe



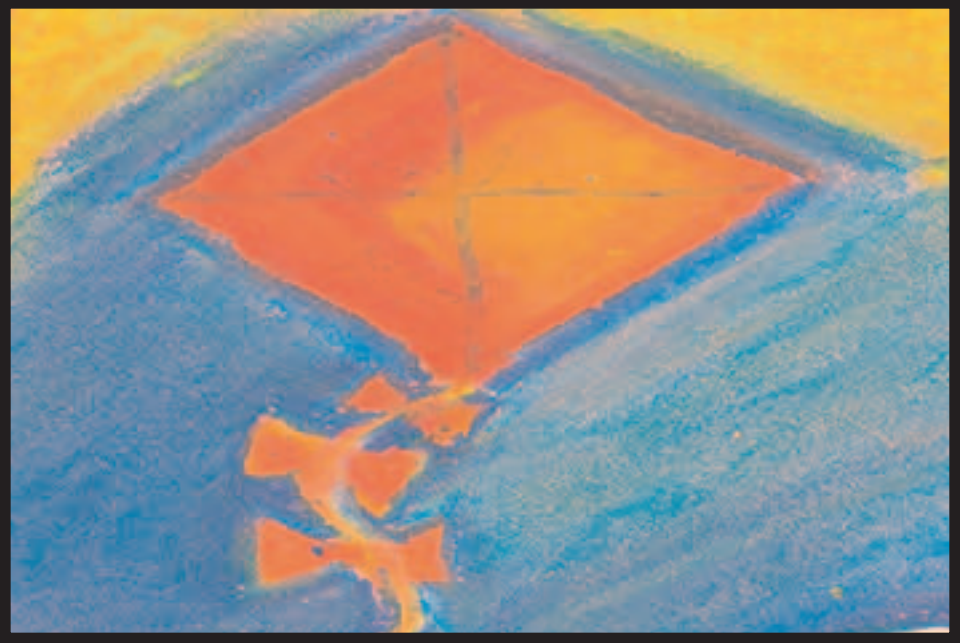
leta



lep



libūņōj

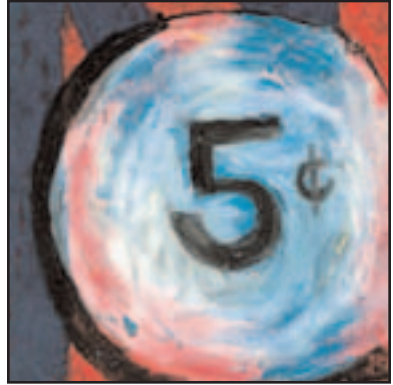


LI

limakaak



!ae



!alim jen



!olle



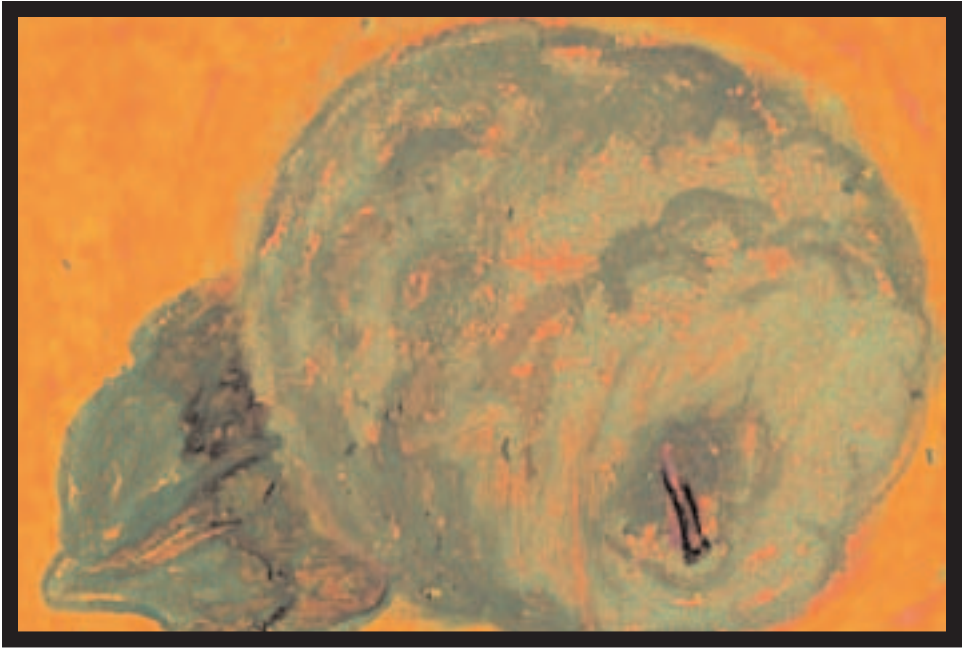
ل! ل!
!addik



mañko

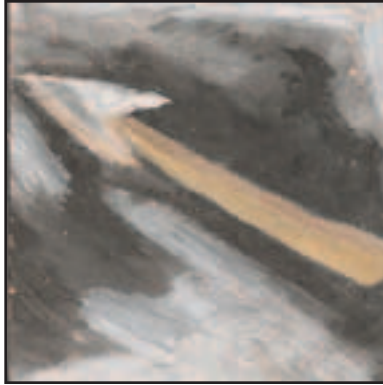


mej

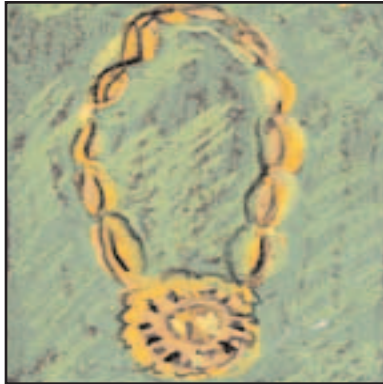


Mm

mā



made



marmar



Mm

maj



ni



niitōļ



niñniñ



Nn

ni kenato



ḥam



ḥat



ḥaip



Nn
s s

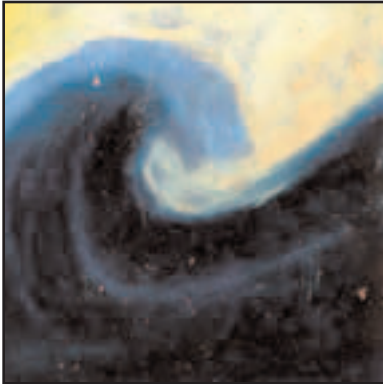
no
s



ñad



ñiñat

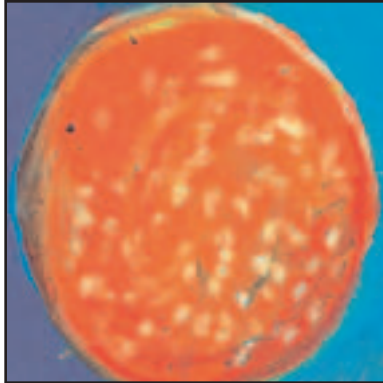


ñōl



Ñ ñ

ñ i



oran



ok

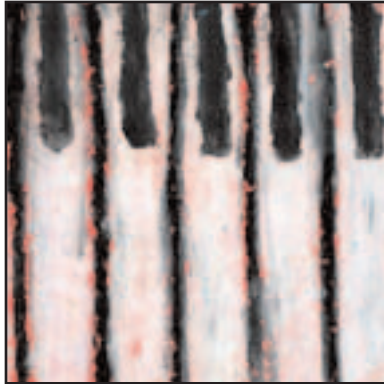


Oo

om



oq



okwōn



Oo
oo
ooj

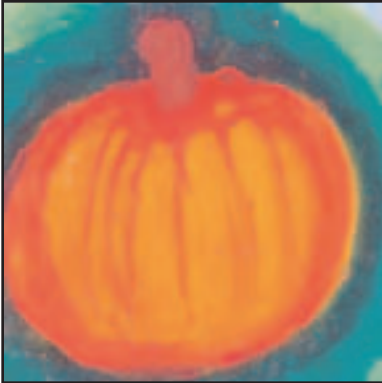


ōr



Ōō

ōn



paañke



peinabōl



pako



pilawe



Pp

pinana



riiñ



rooj



Rr

raj



take



tōreej



taij



Tt

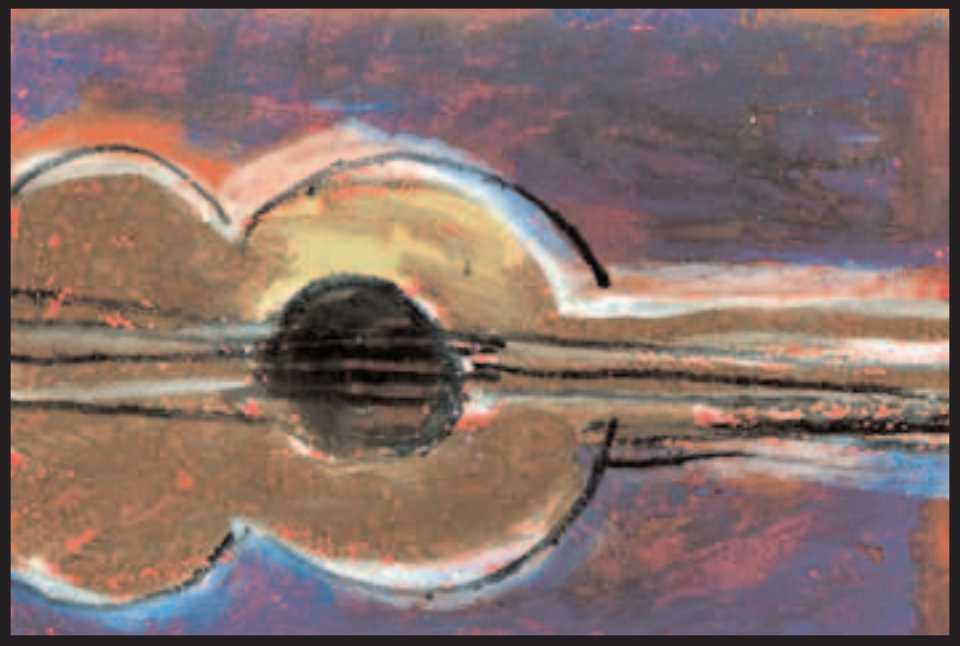
to!



ujooj



um₃



Uu

ukulele



۱۱

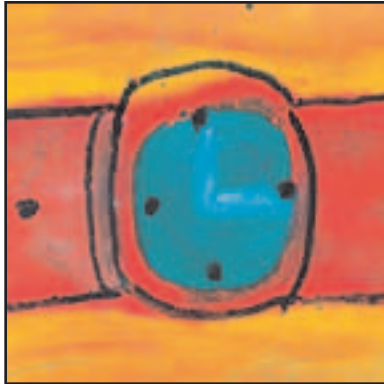


ပီပီ

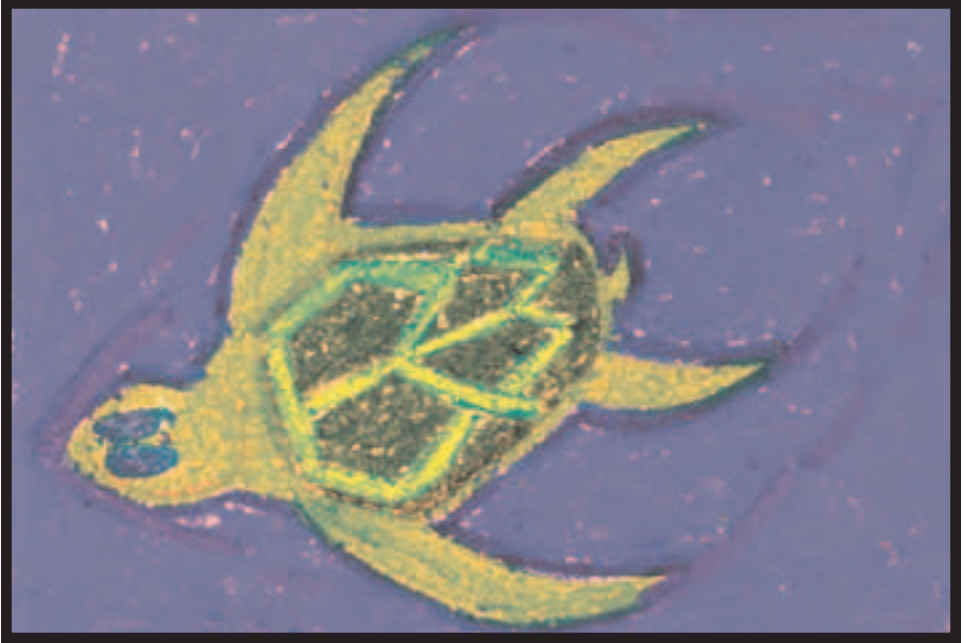
ပီပီ



wōd



waj



Ww

wōn

English Translations

addi-lep

aḷ

aolōk

at

awa

ānbwin

āne

āt

baj

baru

boṭi

bōtta

dak

dāp

deel

di

ek

el

toe

sun

jellyfish

hat

clock

skinny man

island

eyebrow

bus

crab

nose

bat

duck

eel

fan

bone

fish

nest

elbōn

iaraj

iep

iia

iju

ine

jaam

jelo

jibōr

jidpān

jijej

keinabbu

kidu

kōrkōr

kweet

kwōdeak

lep

leta

libbukwe

libūñōj

elephant

taro

basket

rainbow

star

sprouting coconut

jam

cricket

zipper

saw

scissors

papaya

dog

canoe

octopus

mustache

egg

letter

shell

shrimp

limakaak

laddik

lae

lalim jen

lolle

mañko

mā

mej

made

maj

marmar

ni

ni kenato

niitōl

niñniñ

naip

nam

nat

no

ñad

kite

boy

calm

nickel

lollipop

mango

breadfruit

eye

spear

worm

shell necklace

coconut

coconut tree

needle

baby

knife

mosquito

bolt

wave

gum

ñi

ñiñat

ñōl

ok

om

oran

okwōn

oo

ooj

ōn

ōr

paañke

pako

peinabōl

pilawe

pinana

raj

riiñ

rooj

taij

tooth

false teeth

top of wave

fishing net

hermit crab

orange

organ

circle

horse

vitamins

grass skirt

pumpkin

shark

pineapple

bread

banana

whale

ring

rose

dice

take

toɿ

tōreej

ujooj

ukulele

uᄁ

ūl

ūlūl

waj

wōd

wōn

turkey

mountain

thread

grass

ukulele

underground oven

dorsal fin

axe

watch

coral

turtle