

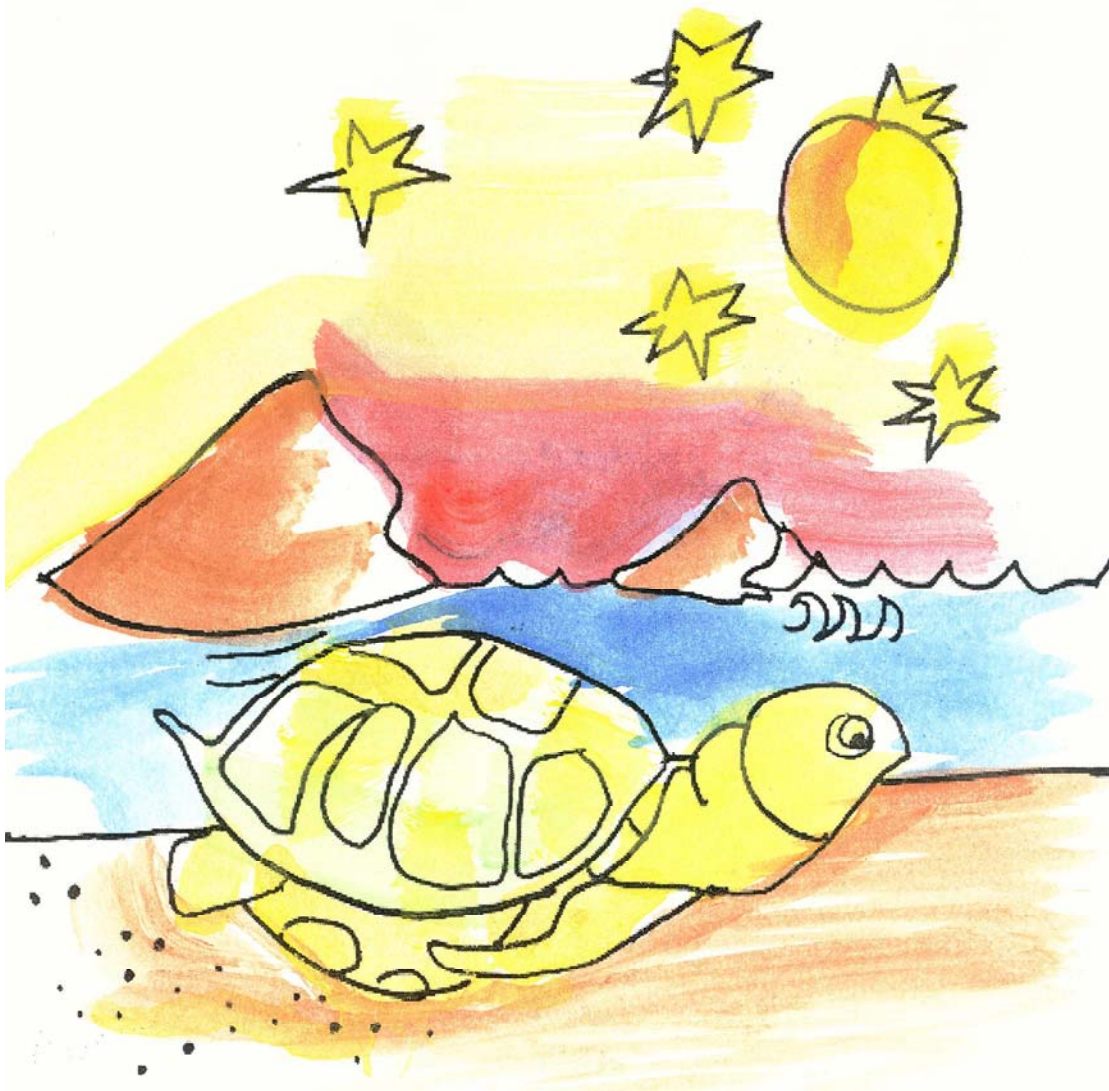


# En Onu Ah Seiloak

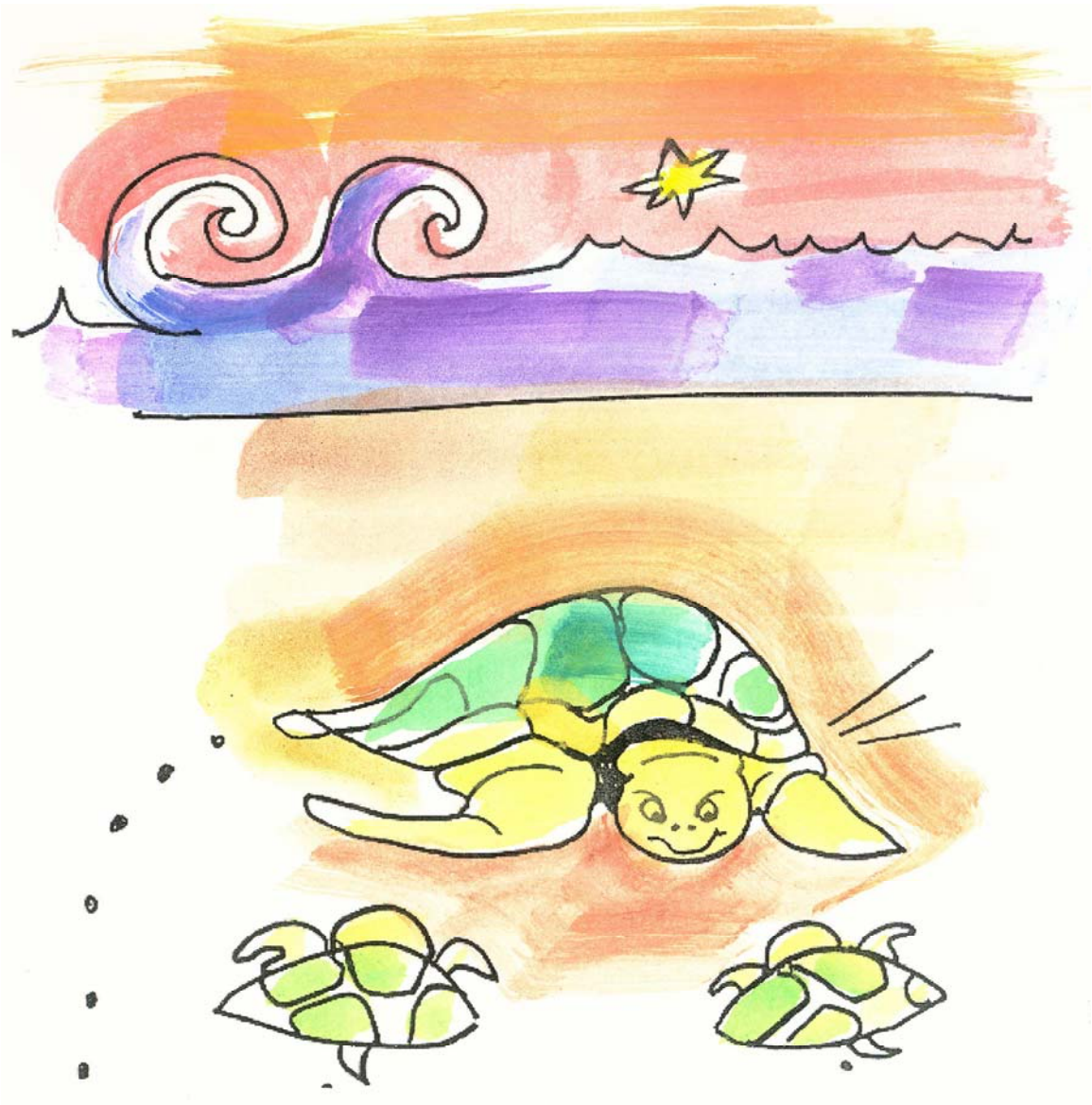
Written by Lee Noto

Illustrations by Lori Phillips

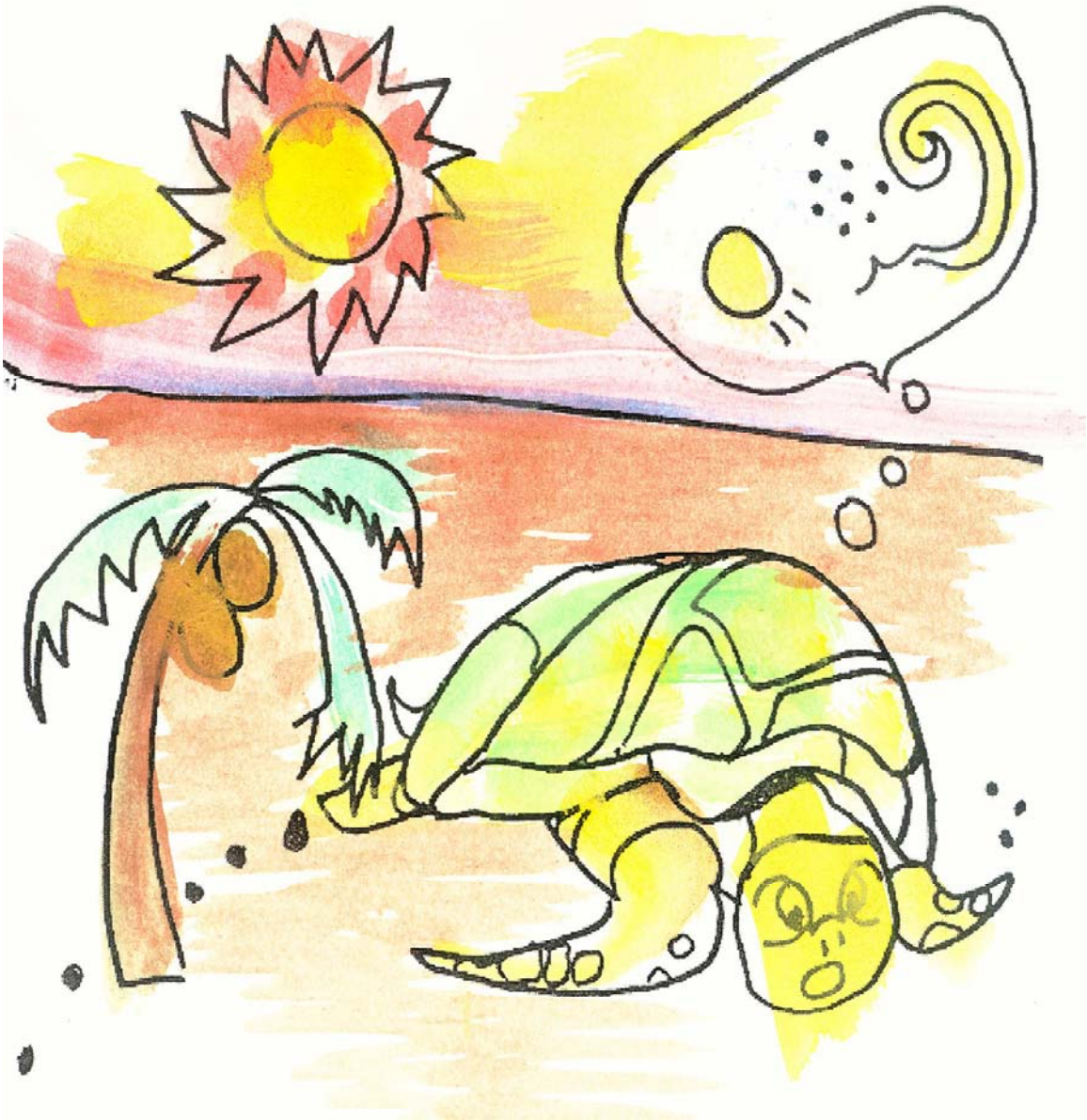
Pohnpeian Translation by Rita Mangarero and Janet Panuelo



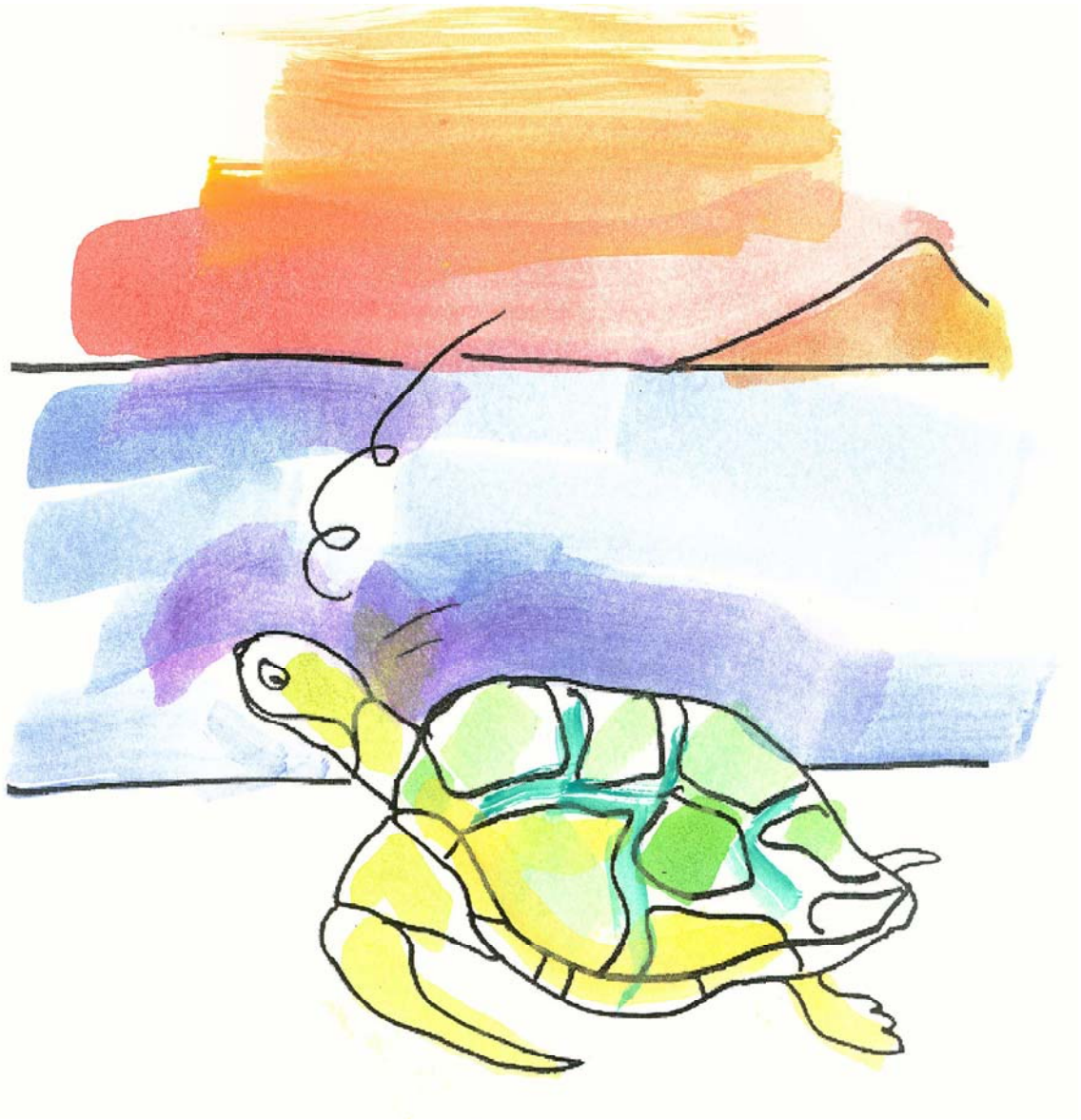
Rahnteiko Onu pidohisang nan dewehu. E sohngada mwomwen ah pahn kohla nansed. E esehda me soahng tohto e anahne esehla nansapw oh nansed.



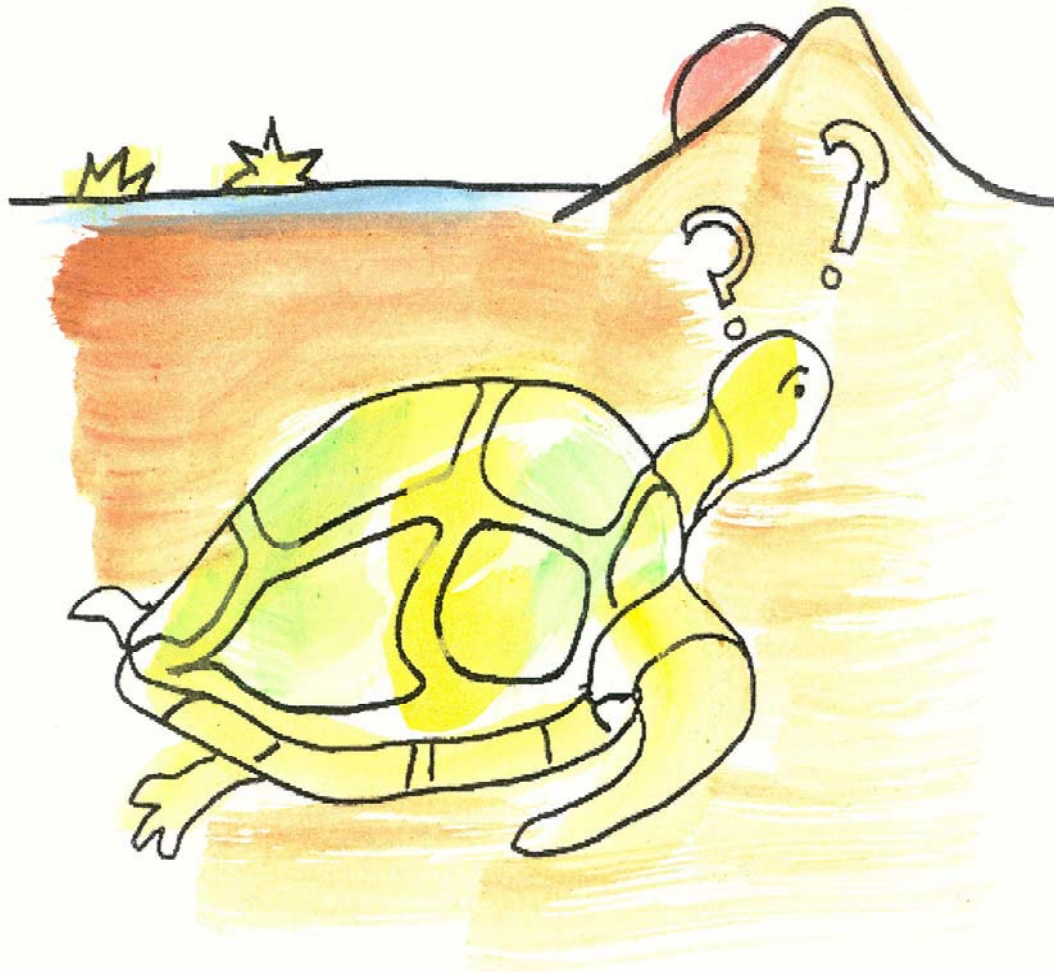
E peren oh pil ekis salah ni ah pahpa nohno  
ara kin ndahng mwomwen kohla nansed.  
Idawehn lingen maram, ah nohno kin nda.  
Kehn arekarek en pihk pahn nehmw, ah  
pahpa nda. Me keieu kesempwal rong mwahu  
ngilen ilok sawa, ira koaros kin nda.



Onu wie medemedewe dahme eh nohno  
pahpa ndahng ko rahn ehu pwon.  
Idawehn lingen maram.kehn arekarek en  
pihk pahn nehmw, oh rong mwahu ngilen  
ilok sawa.



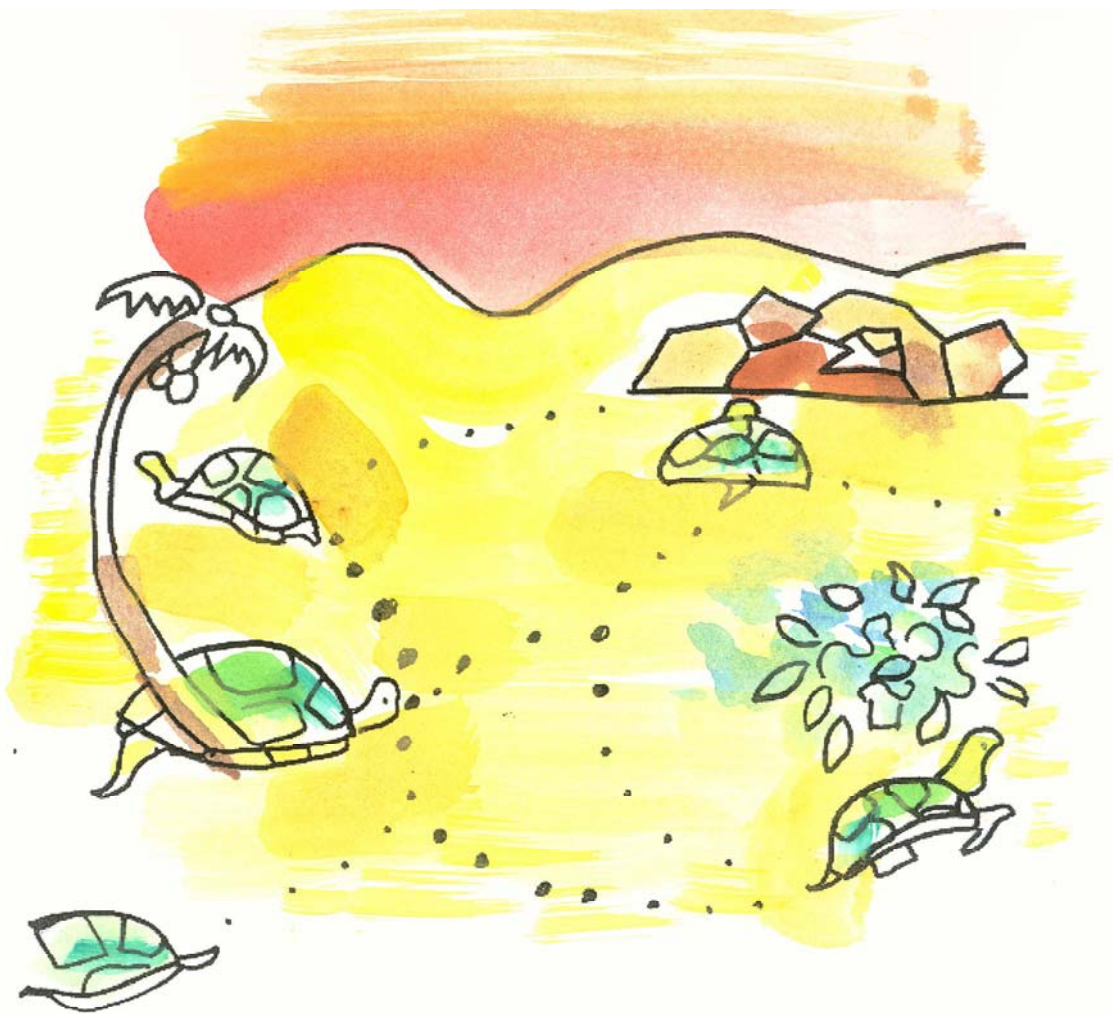
Onu diar apwal. E salongalahr. E sehselahr ah  
nohno pahpa. E pil sehselahr dewehu.



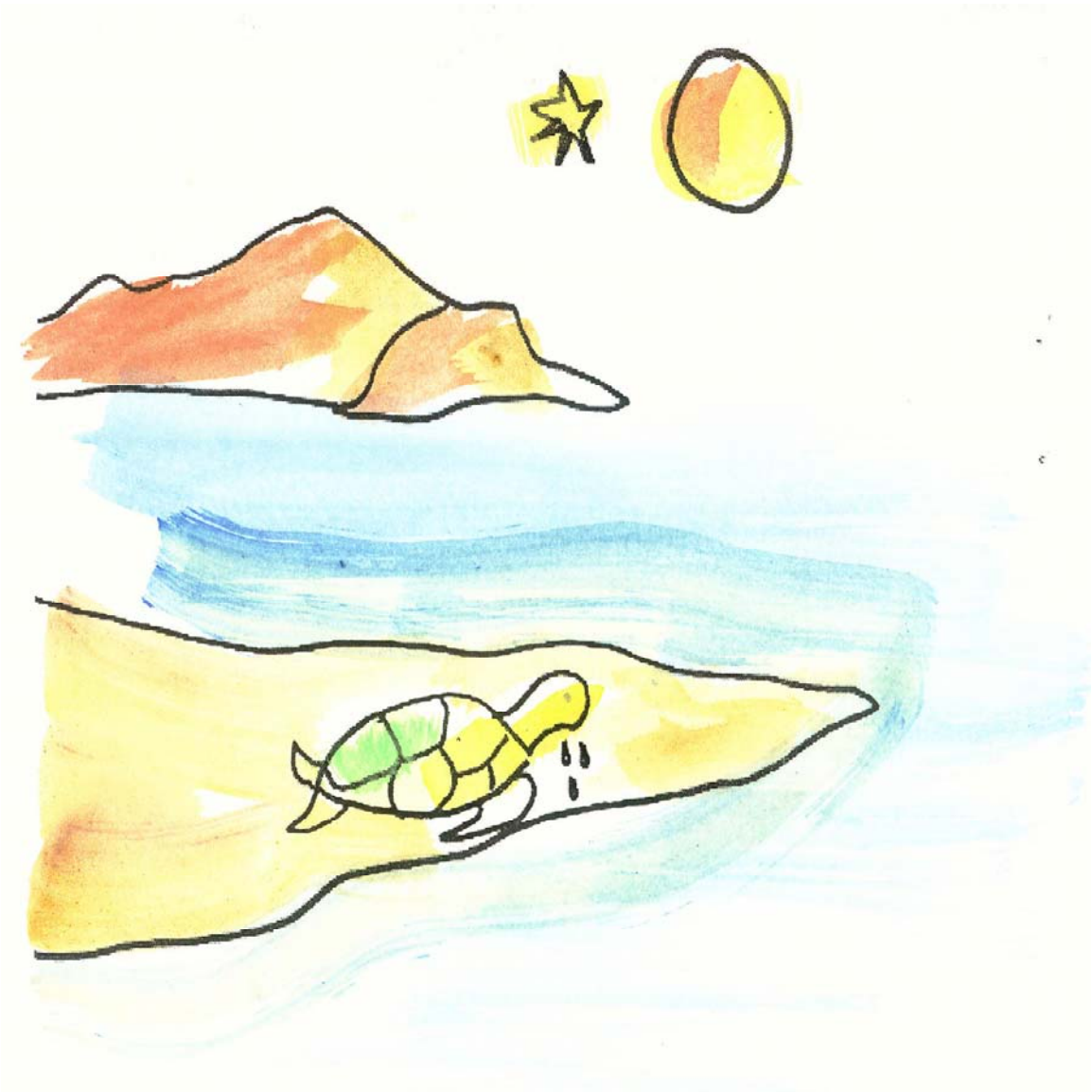
Inohhh! Ipahhh!  
Ia kumwa?

Sohte me sapeng.

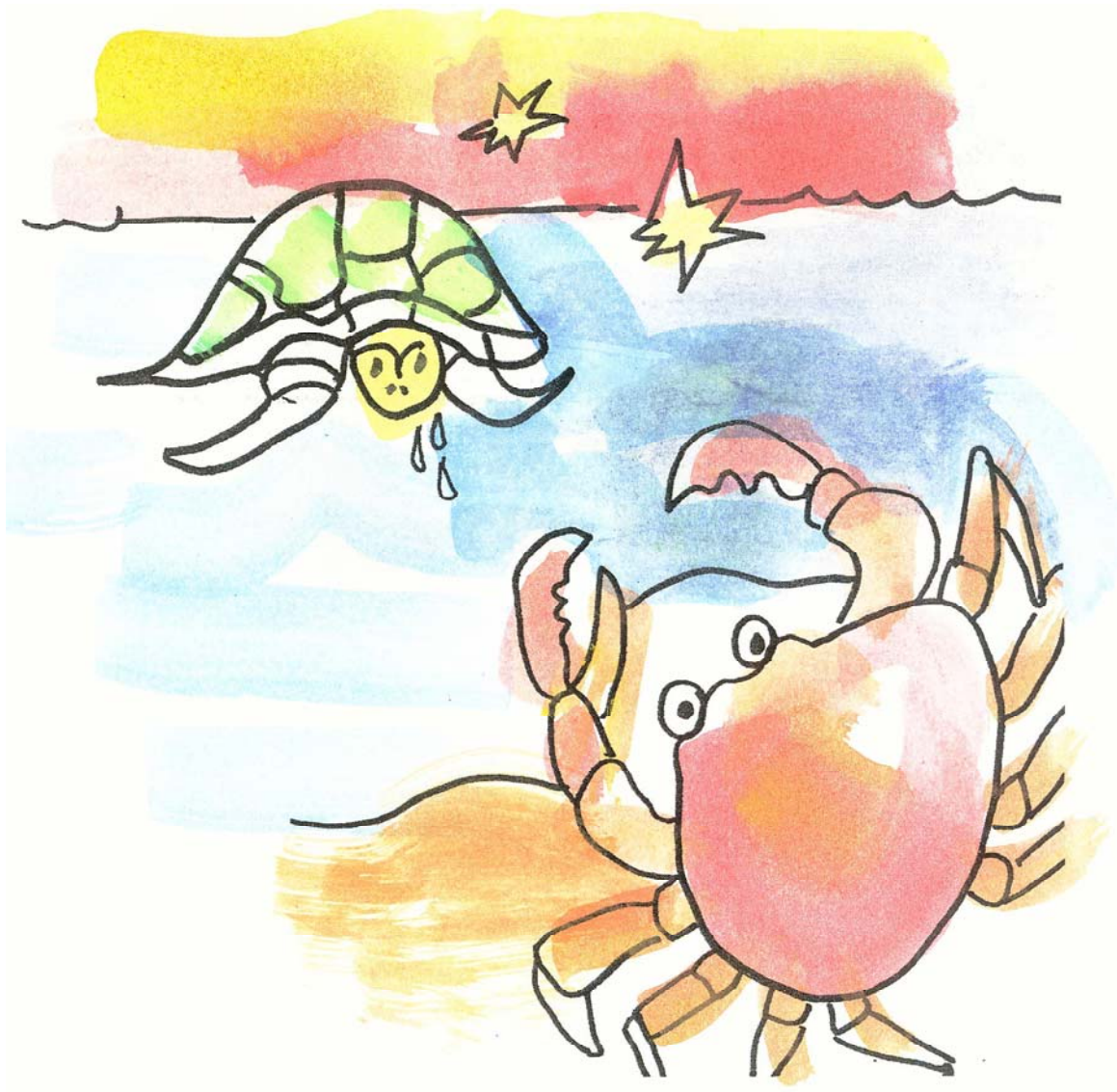
I pahn rapahkin kumwa, Onu nda. Ketipin  
kihrilahr oh e tepier rotorotala.



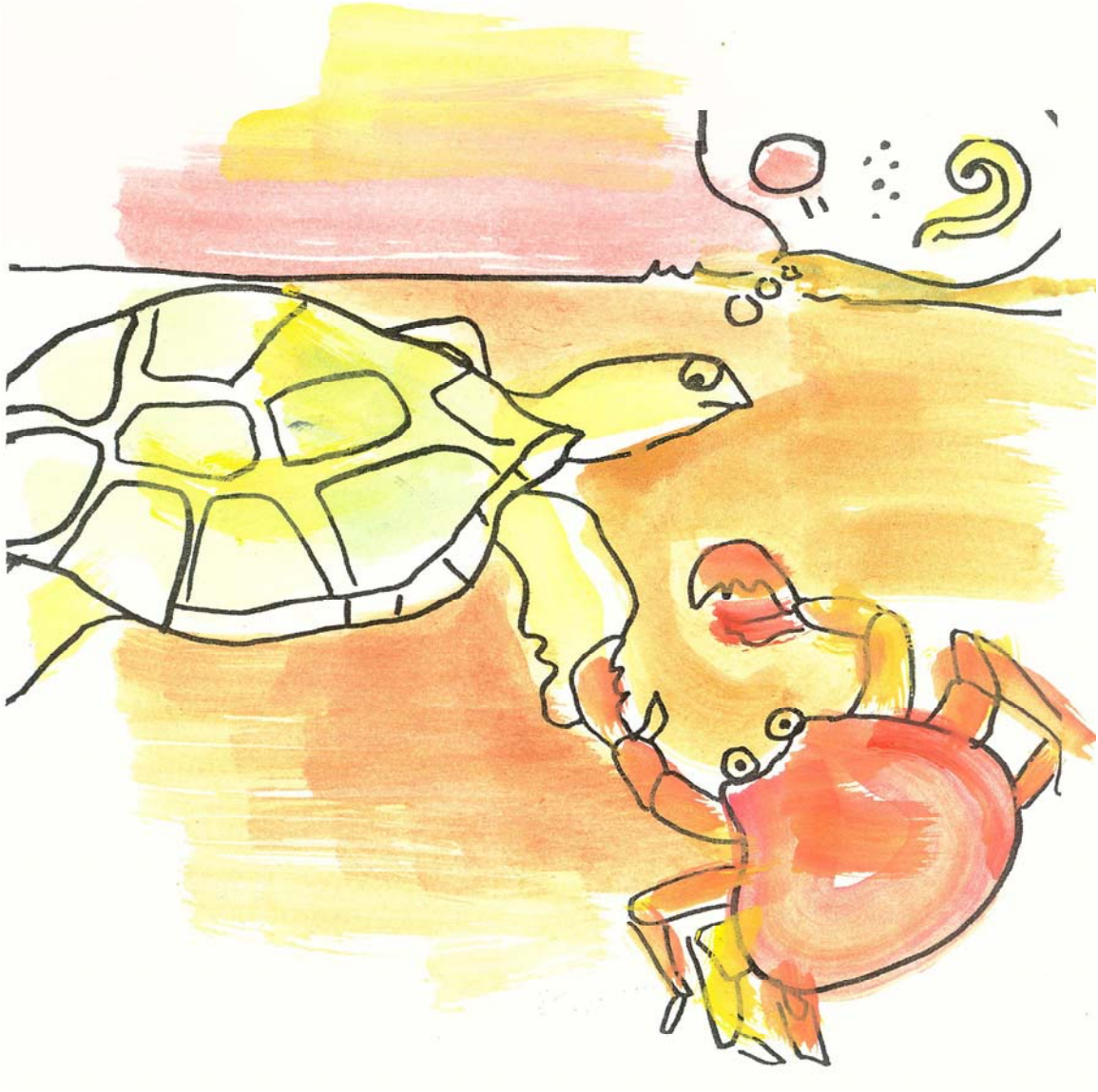
**Onu rapahkin ira oh pwang. Met e  
salodahr.**



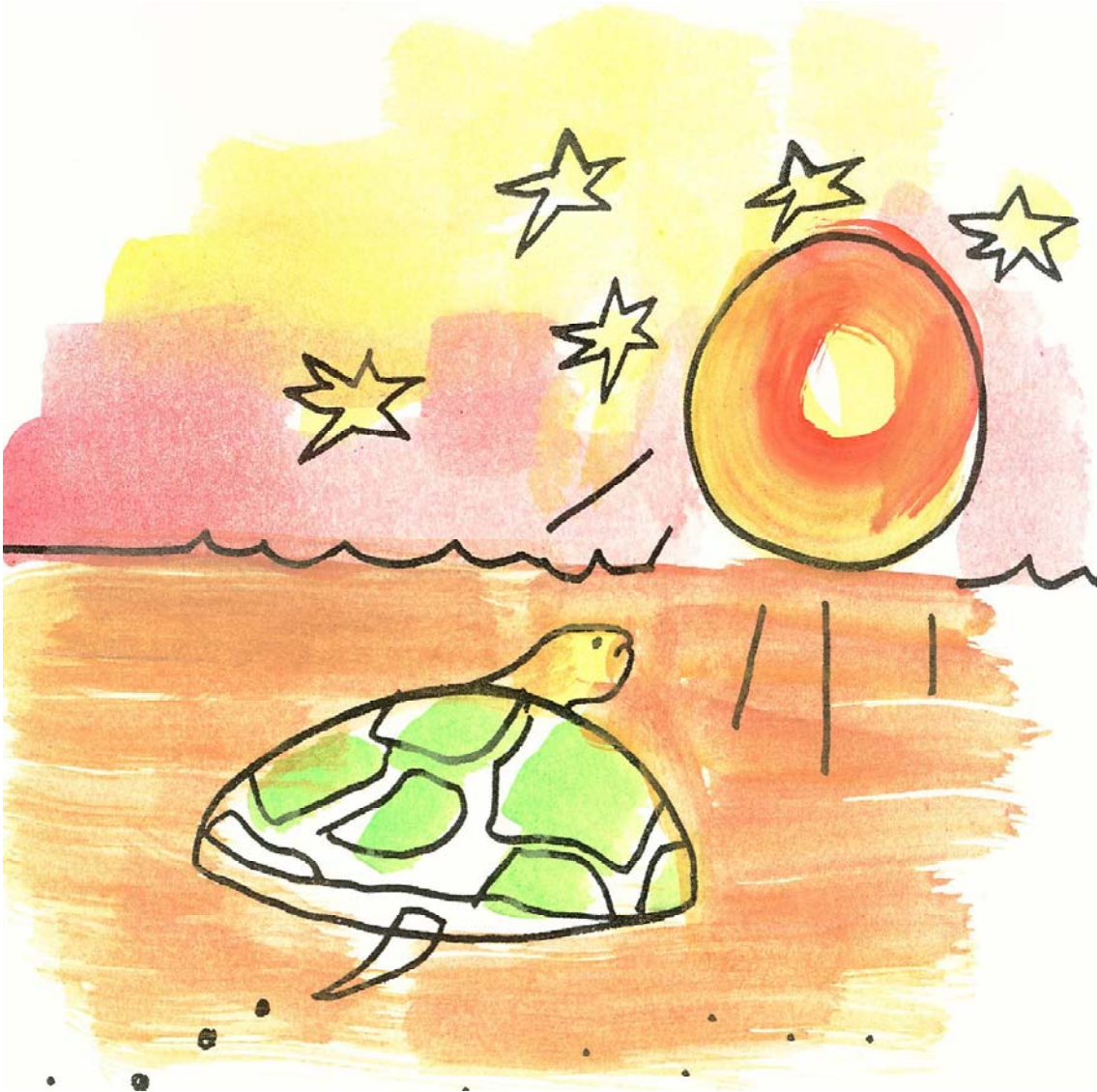
"Iaduwén ma I sohte diar ira? Dah I pahn wia?," Onu nda.  
E udahn salohda pwe ih kelehpw. Ih eri sengiseng.



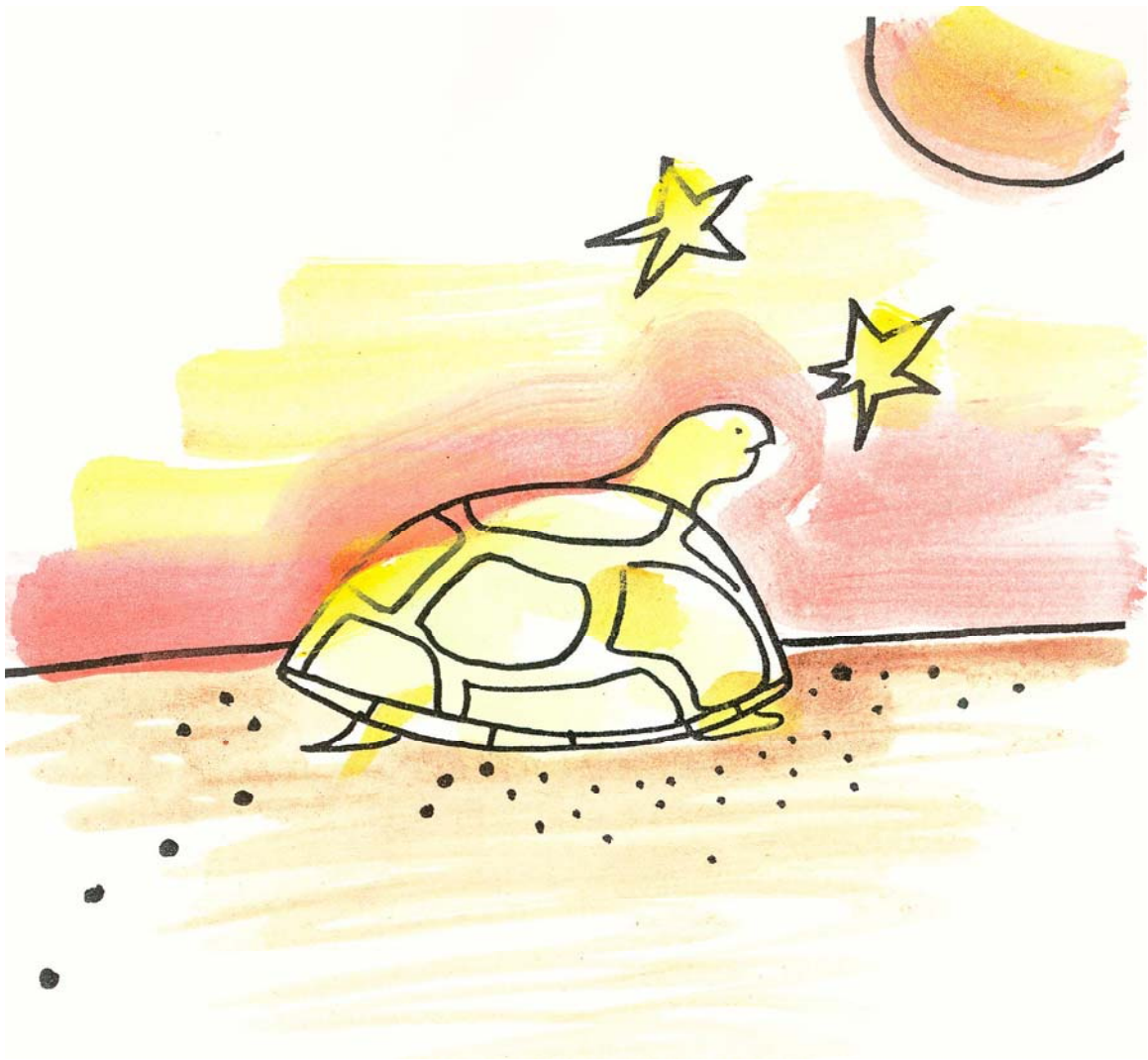
“Wehi dah ke sengisengki?” Pworu idek. “Ahki I sehselahr pahpa ih nohno. Oh I pahn iang ira kohdihla nansedo”, Onu nda. “Mie mehkot ira nda”, Pworu idek. “Ehng”, Onu nda. Pworu dene, “Na song tamanda.”



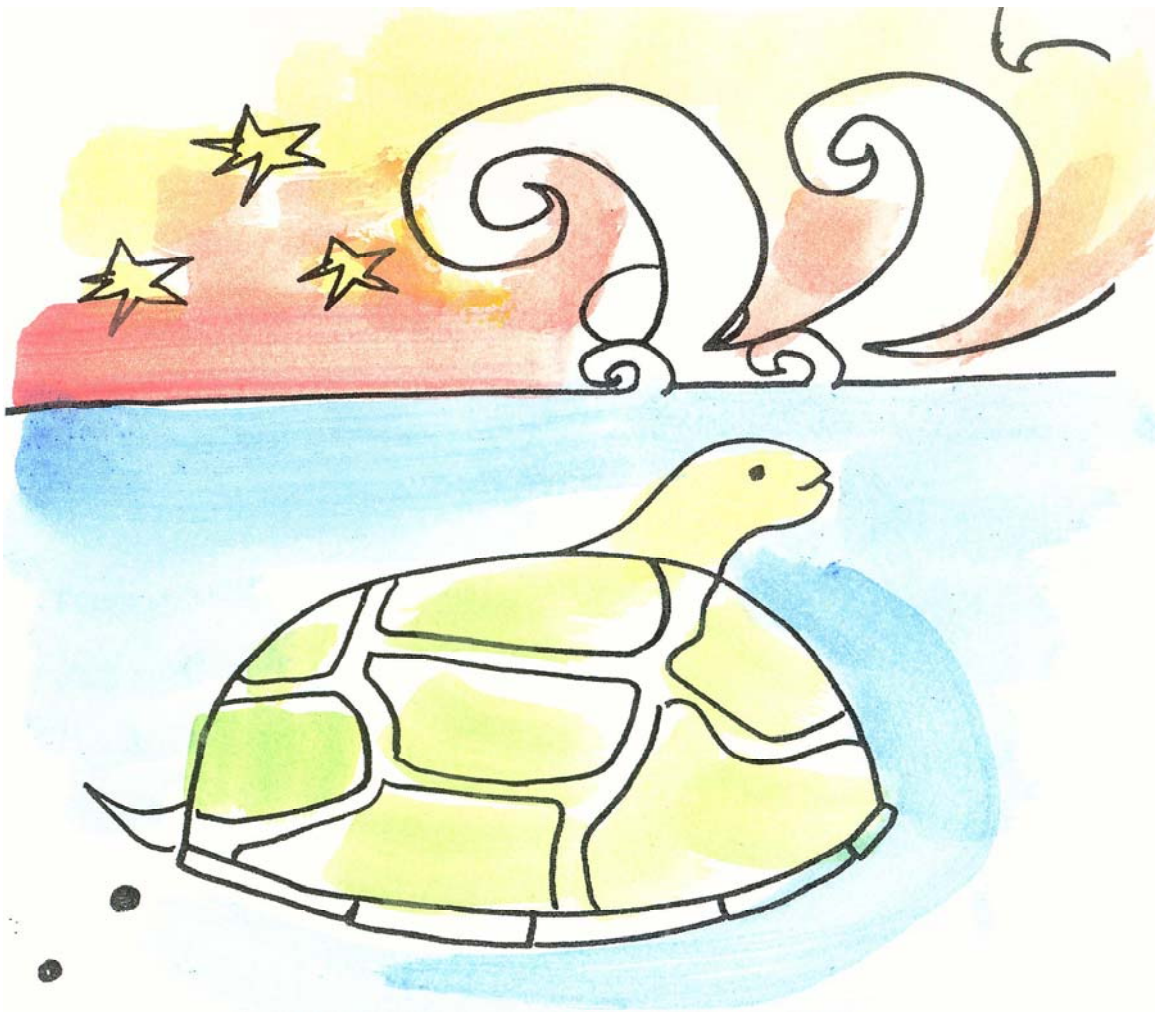
Onu eri tamanda me ira nda, idawehn lingen  
maram, kehn arekarek en pihk pahn nehmw,  
oh rong mwahu ngilen ilok sawa.



Onu eri wawai kohla. Epa kilangada marain ehu. "Mwein ih lingen maram en met", Onu nda.



Ih kehnda arekarek pahn neho. A dene,  
mwein ih pihk en met. Onu medewe me e  
kerenlahr.



Mwuri epa rongada lapalahn ngihl ehu. A dene, "Mwein ih ngilen ilok sawahn met".



“Io ira”. Onu kilangada ah nohno pahpa.  
Ira idek dah e pwandiki, oh ma e  
salongala.



Onu dene ehng ahpw e tamanda dahme ira ndahng ko. Idawehn lingen maram, kehn arekarek en pihk pahn nehmw, oh rong mwahu ngilen ilok sawa. "Ihme me I lelikihdo rehmwa". Onu nda.

"A met I onopadahr seiloakla pahsed. Eri kitail", Onu nda.



Pacific Resources for Education and Learning