

Satawalese Alphabet

a, ae, ch, e, eo, f, g, i, iu, k, m, mw, ng, n, oa,
o, p, pw, rh, r, s, t, u, w, y

Lori Phillips, EdD



P R E L

Published by Pacific Resources for Education and Learning (PREL)

900 Fort Street Mall, Suite 1300 • Honolulu, Hawaiji 96813

Toll free: (1-800) 377-4773 • Phone: (808) 441-1300 • Fax: (808) 441-1385

Email: askprel@prel.org • Website: www.prel.org



Distributed by Bess Press

3565 Harding Avenue • Honolulu, Hawaiji 96816

Toll free: (1-800) 910-2377 • Phone: (808) 734-7159 • Fax: (808) 732-3627

Email: info@besspress.com • Website: www.besspress.com

Cover design by Carol Colbath

Copyright © 2005 by PREL

Library of Congress Cataloging-in-Publication Data

Satawalese alphabet / Lori Phillips.

p. cm.

Includes illustrations.

ISBN 1-57306-261-8

1. Satawalese language - Alphabet -
Juvenile literature. I. Pacific Resources
for Education and Learning. II. Title.

PL6228.P32 2004 499.5-dc21

Printed in China

This product was funded by the U.S. Department of Education (U.S. ED) under the Regional Educational Laboratory program, award number ED01CO0014. The content does not necessarily reflect the views of the U.S. ED or any other agency of the U.S. government.

This book is part of the *Island Alphabet Books* series, which features languages and children's artwork from the U.S.-affiliated Pacific. Each book contains the complete alphabet for the language, four or five examples for each letter, and a word list with English translations. The series is published by PREL, a non-profit corporation that works collaboratively with school systems to enhance education across the Pacific.

This alphabet book has been reviewed by:

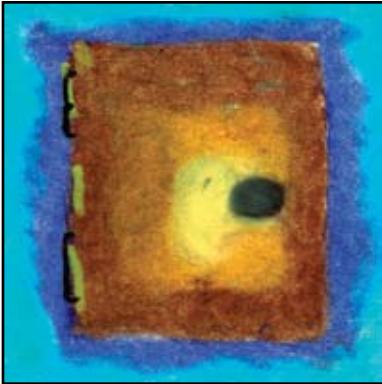
Richard Ligiteiwel, Satawalese Linguist
Yap State Department of Education



amma



anius



asam



aaw

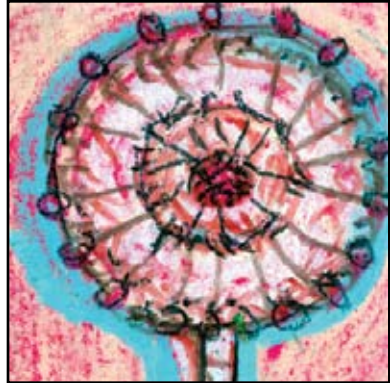


Aa

angkar



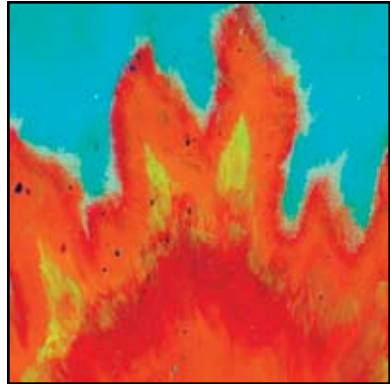
aennirhimw



aenipeo



aeff



aengaet



Ae ae
ae net



chius



cherh



chuufan



Ch ch
chaangas



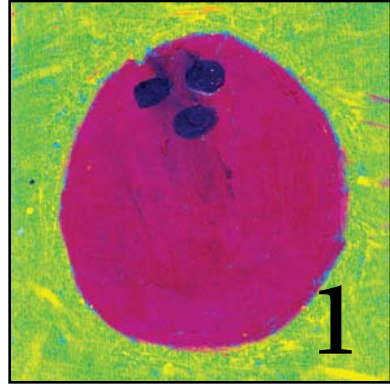
ennap



efaeng



enefen



eew



Ee
eniig



eorneoneo



eorr



Eo eo
eotiw



faeii



fiu



faiun mas



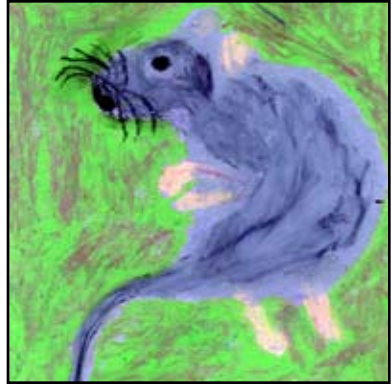
faniun maniug



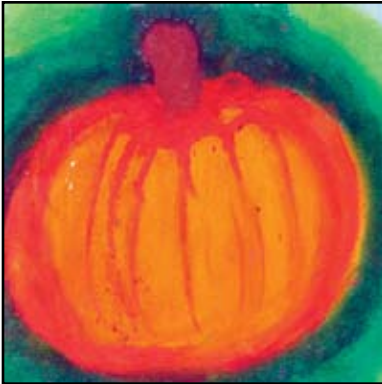
Ff
faniuw



geo



geerh



gaenmasa



gonaag



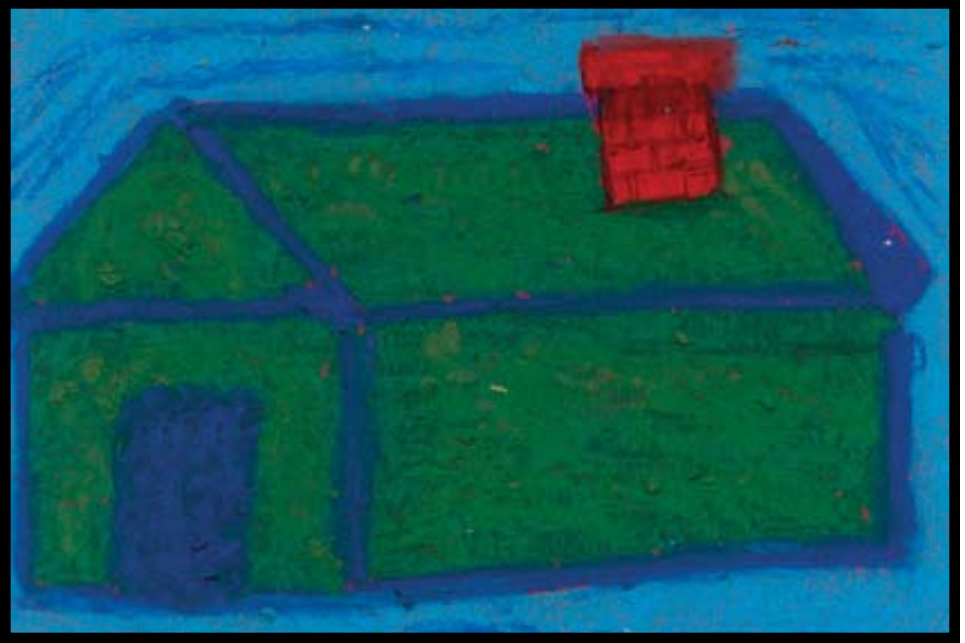
Gg
gius



iino



ittae



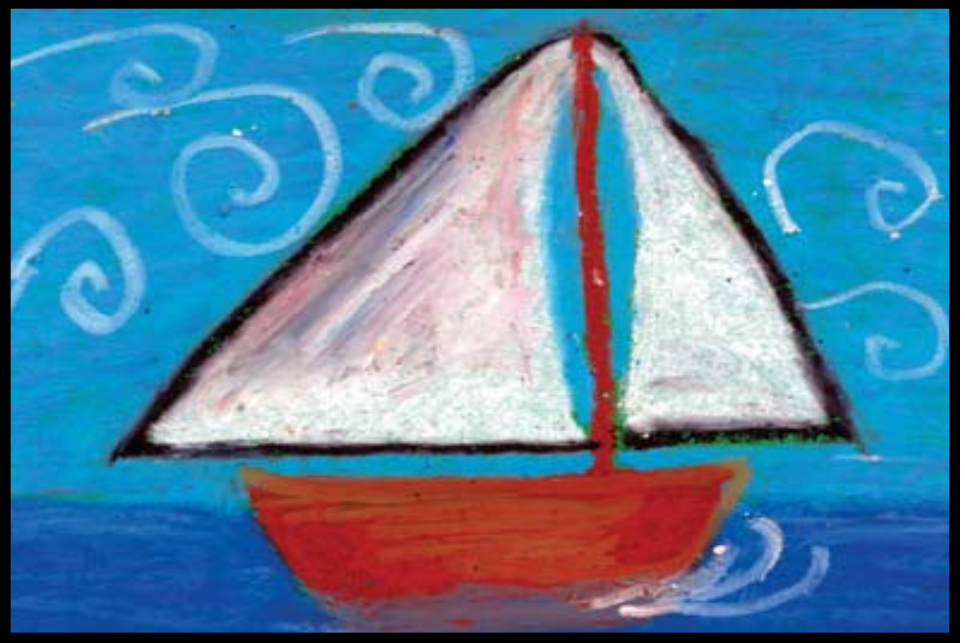
Ii
iimw



iuriur



iummi



Iu iu
iu faeiipw



kakeru



kiing



kayeru



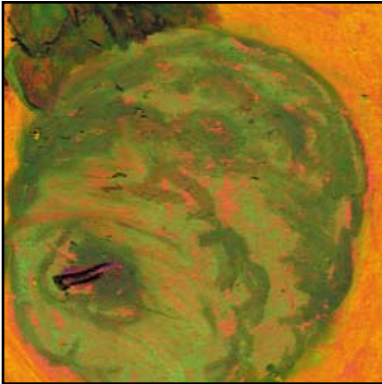
Kk
kiiy



manuig



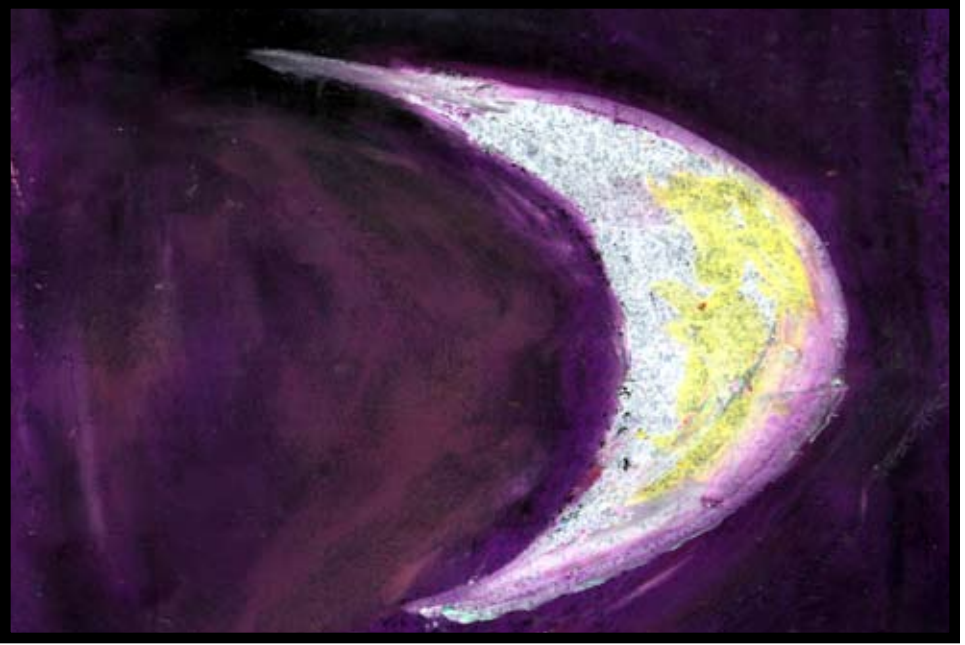
mmaeg



maei



mengag



Mm
meram



mwaen



mwusoa



mwoattotiw



Mw mw
mwaer



ngii



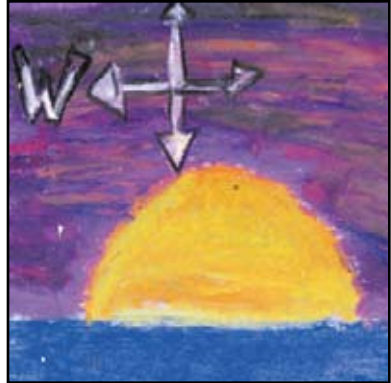
ngiut



Ng ng
nganga



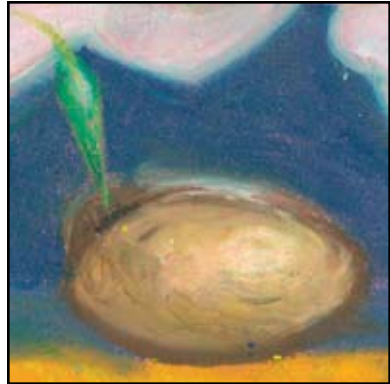
noamw



netow



nittofirh



niu



Nn
nogga



oas



oappwun



oaguwa



Oa oa
oarong



orogeen



oroor



onorhap



Oo
okas



paarang



peon irae



paeii



Pp
paew



pwaeipwai



pwoor



pweon



pwuu



Pw pw
pwoot



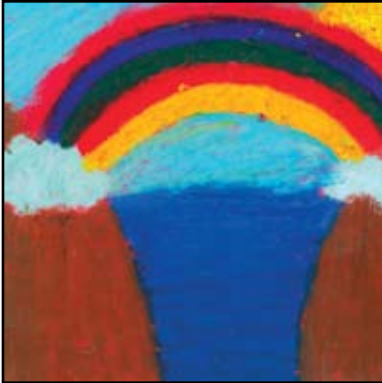
rheonifarh



rhuug



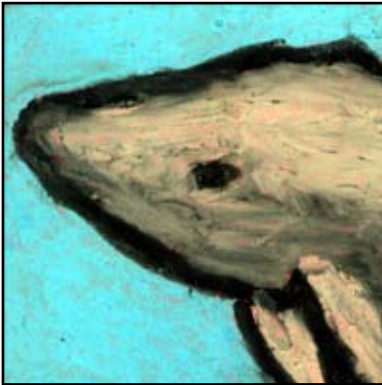
Rh rh
rhuguppwun



raesim



raaw



raaw



reere



Rr
riing



saen



soapaen



soagun



saar



Ss
sepwin



tengki



tento



tiifi



Tt
toapw



ussen



upw



ug



Uu
ukunene



woneiig



witias



wiirh



wonou

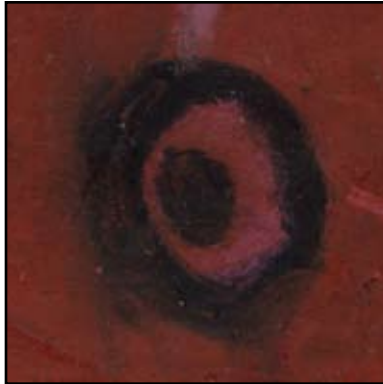


Ww

waa



yongyong



yowwow



Yy

yaetilmwaer

English Translations

aaw

angkar

amma

anius

asam

aennirhimw

aenipeo

aeff

aengaet

aenet

chius

cherh

chuufan

chaangas

ennap

efaeng

enefen

mouth

anchor

hammer

mustache

door

hair

fan

crab

fire

sun

juice

chair

nail

candle

road

north

elephant

eew
eniig
orneoneo
eorr
eotiw
faeii
fiu
faiun mas
faniun maniug
faniuw
geo
geerh
gaenmasa
gonaag
gius
iino
ittae
iimw
iuriur

one
thirty
to scream
south
east
manta ray
stars
eye
rooster spur
land
fish hook
rat
pumpkin
dog
octopus
thread
up
house
zipper

iummi
iufaeiipw
kakeru
kayeru
kiing
kiiy
manuig
mmaeg
maei
mengag
meram
mwaen
mwusoa
mwoattotiw
mwaer
ngii
ngiut
nganga
noamw

arrow
sailboat
the letter X
frog
king
key
rooster
tattoo
breadfruit
dress
moon
man
worm
valley
lei
tooth
squid
duck
mosquito

netow
nittofirh
niu
nogga
oas
oappwun
oaguwa
oarong
orogeen
oroor
onorhap
okas
paarang
peon irae
paeii
paew
pwaeipwai
pwoor
pweon

west
shrimp
coconut
slippers
horse
lamp
needle
fish (specific type)
organ
dock
lie facedown
cookie
bell
flower
graveyard
shark
papaya
ball
soil

**pwuu
pwoot
rheonifarh
rhuug
rhuguppwun
raesim
raaw
raaw
reere
riing
saen
soapaen
soagun
saar
sepwin
tengki
tiifi
tento
toapw**

**betel nut
nose
hat
hills
volcano
rainbow
whale
pot
saw
ring
rope
ax
egg
knife
shovel
light bulb
videotape
tent
clouds**

ussen

uupw

uug

ukunene

woneiig

witias

wiirh

wonou

waa

yongyong

yowyow

yaetilmwaer

gecko

belly

fishing net

ukulele

sixty

eagle

banana

six

canoe

grass skirt

yoyo

proper name

Also available in:

Palauan

Kosraean

English

Hawaiian

Marshallese

Sāmoan

Pohnpeian

Chamorro

Carolinian

Chuukese

Yapese