

# Pohnpeian Alphabet

a, e, i, o, oa, u, h, k, l, m, mw, n, ng,  
p, pw, r, s, d, t, w

Lori Phillips, EdD



P R E L

Published by Pacific Resources for Education and Learning (PREL)

900 Fort Street Mall, Suite 1300 • Honolulu, Hawai'i 96813

Toll free: (1-800) 377-4773 • Phone: (808) 441-1300 • Fax: (808) 441-1385

Email: [askprel@prel.org](mailto:askprel@prel.org) • Website: [www.prel.org](http://www.prel.org)



Distributed by Bess Press

3565 Harding Avenue • Honolulu, Hawai'i 96816

Toll free: (1-800) 910-2377 • Phone: (808) 734-7159 • Fax: (808) 732-3627

Email: [info@besspress.com](mailto:info@besspress.com) • Website: [www.besspress.com](http://www.besspress.com)

Cover design by Carol Colbath

Copyright © 2004 by PREL

Library of Congress Cataloging-in-Publication Data

Pohnpeian alphabet / Lori Phillips.

p. cm.

Includes illustrations.

ISBN 1-57306-215-4

1. Ponape language - Alphabet -  
Juvenile literature. I. Pacific Resources  
for Education and Learning. II. Title.

PL6295.P32 2004 499.5-dc21

This product was funded by the U.S. Department of Education (U.S. ED) under the Regional Educational Laboratory program, award number ED01CO0014. The content does not necessarily reflect the views of the U.S. ED or any other agency of the U.S. government.

This book is part of the *Island Alphabet Books* series, which features languages and children's artwork from the U.S.-affiliated Pacific. Each book contains the complete alphabet for the language, four or five examples for each letter, and a word list with English translations. The series is published by PREL, a non-profit corporation that works collaboratively with school systems to enhance education across the Pacific.

*Special thanks to the following people and organizations  
for their patience and enthusiastic support of this project:*

Palama Settlement ICT Learning Center

National Endowment for the Arts

Tom Barlow, Karen Ehrhorn, Kay Fukuda, Nancy Lane, Lee Noto,

Mary Dodd Pearson, and Ludwig David van Broekhuizen  
of Pacific Resources for Educational and Learning (PREL)

Celina Shetana and John Sullivan of Digital Majic

*This alphabet book has been reviewed by:*

Kolden E. Manuel

Curriculum, Instruction and Assessment Coordinator

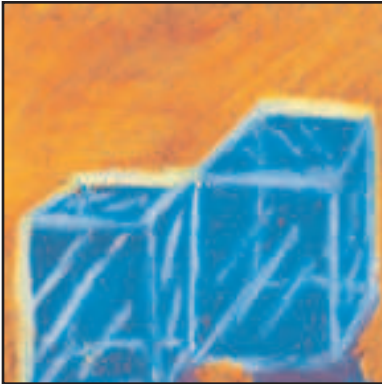
Pohnpei Department of Education



ais krihm



apel



ais kiup



arep



Aa

angke



**e**lin kapwat



**e**lipant

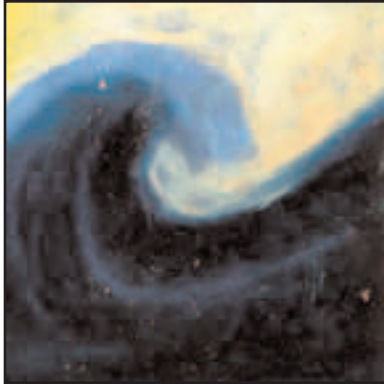


**e**dinieii



Ee

elimoang



**i**lok



**i**kel



Ii

ihmw



ohl



ose



Oo

ok



oarong

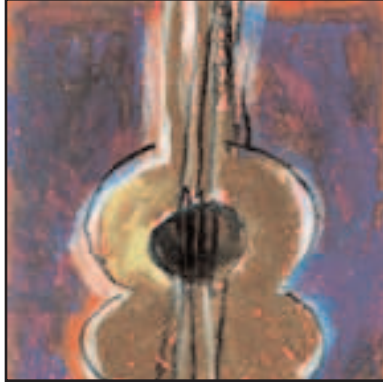


oapwunek



Oa oa

oahs



ukulehle



uht



Uu

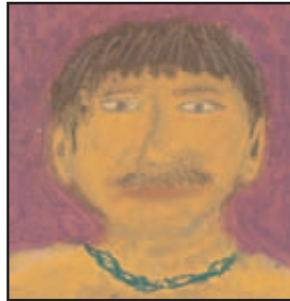
usu



ehk



ihmw



ohl



oahs



uht



reireila ma patehng  
a, e, i, o, oa, u

Hh

ahia



**k**ihng



**k**ihs



**k**ehngid



**k**airu



**Kk**

**k**idi



lapwed



lul



lisarop

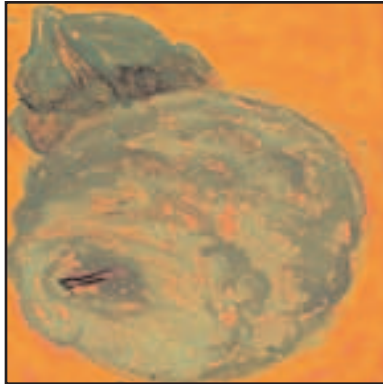


LI

likedepw



**m**ensiok



**m**ahi

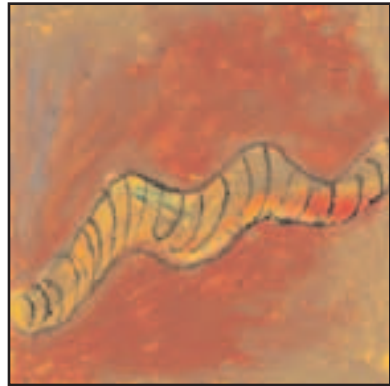


Mm

memiap



**mw**ahng



**mw**aahs



**mw**uroi



Mw mw

mwahmw



**n**ahna

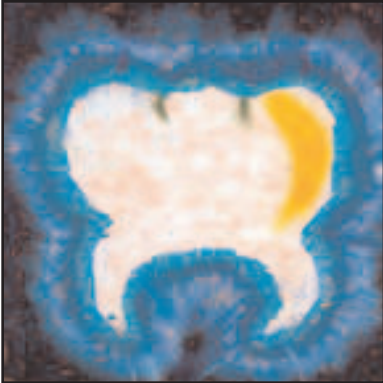


**n**ihpwong



Nn

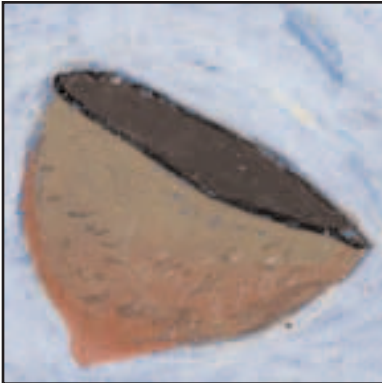
nih



**ngih**



**ngihpwar**



**ngarangar**



Ng ng  
ngalangal



**p**ahs



**p**ehwehwe



Pp

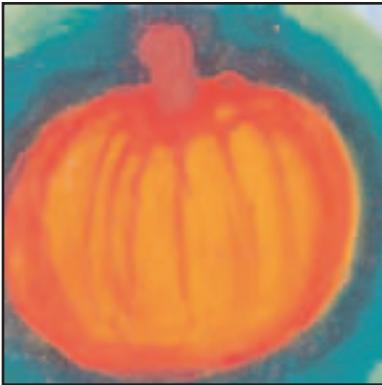
pelipel



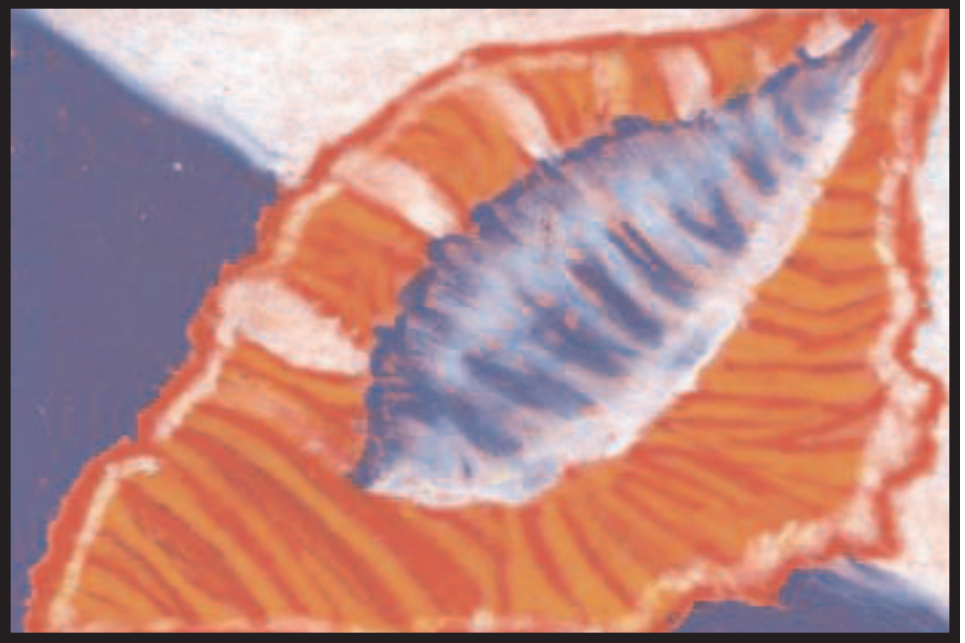
**pwehk**



**pwihk**



**pwengkin**



Pw pw  
pwili



**r**ohs



**r**ahr



**r**oahs



Rr

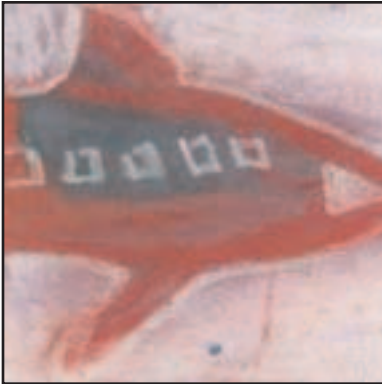
ring



**s**ampah



**s**ele



**s**ompihr

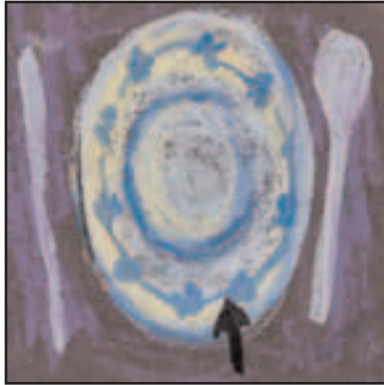


**s**ile

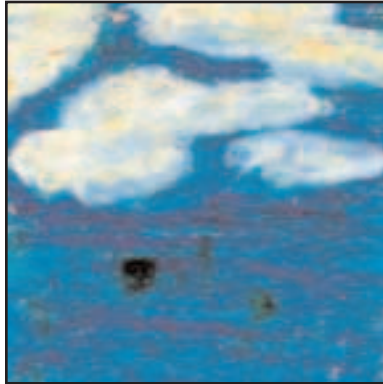


Ss

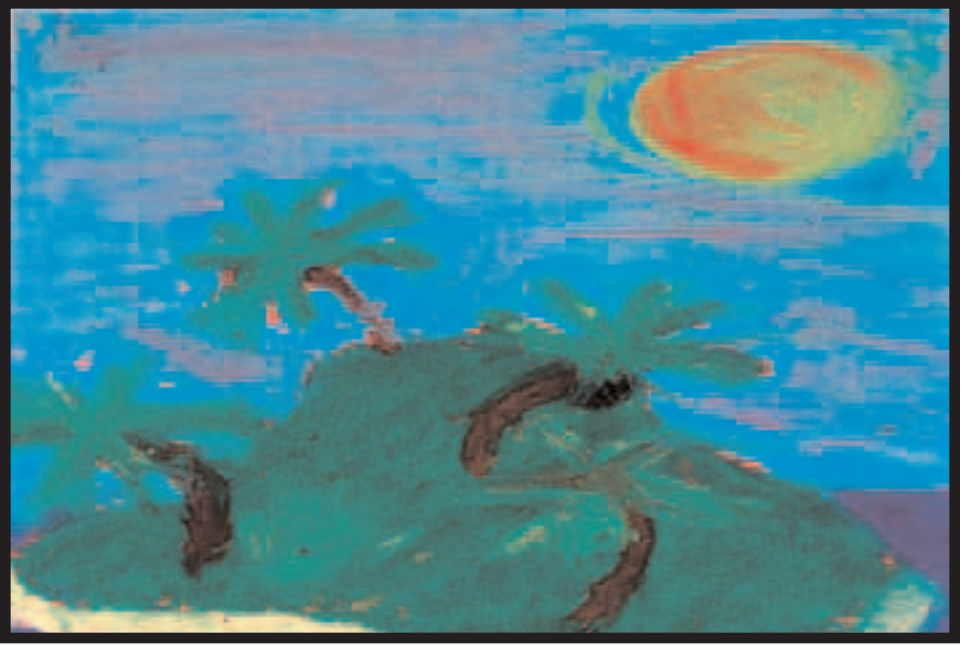
sahl



dahl



depwek



Dd

deke



tumwe



teki



tihti



Tt

tehk



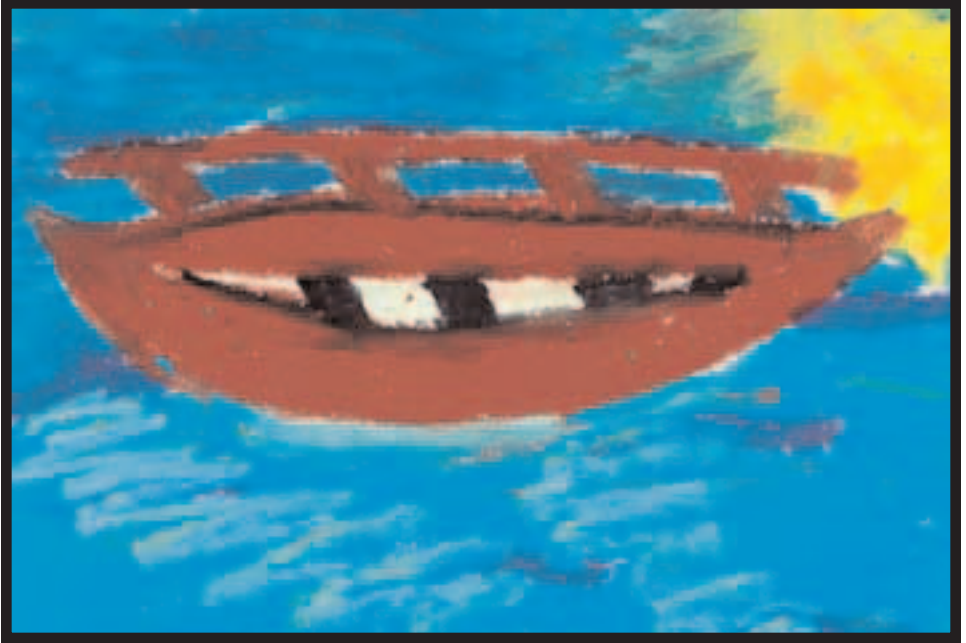
**w**ahu



**w**ahn rohs



**w**ehi



Ww

wahr

## English Translations

ais kiup	ice cube
ais krihm	ice cream
ahia	rainbow
angke	anchor
apel	apple
arep	arrow
ehk	ten
elimoang	crab
elin kapwat	lei
elipant	elephant
ediniei	smoke
ihmw	house
ikel	eagle
ilok	wave
ohl	man
ok	candle
ose	rooster spur
oahs	horse
oapwunek	wash face
oarong	fish (specific type)
uht	banana

ukulehle  
usu  
kairu  
kehngid  
kihng  
kihs  
kidi  
lapwed  
likedepw  
lisarop  
lul  
mahi  
memiap  
mensiok  
mwahmw  
mwahng  
mwahs  
mwuroi  
nahna  
nih  
nihpwong  
ngalangal  
ngarangar

ukulele  
stars  
frog  
mango  
rooster  
octopus  
dog  
eel  
shrimp  
hat  
flames  
breadfruit  
papaya  
crickets  
fish (general term)  
taro  
worm  
bird  
mountain (mountain range)  
coconut tree  
night  
low tide  
coconut cup

ngih  
ngihpwar  
pahs  
pehwehwe  
pelipel  
pwehk  
pwengkin  
pwihk  
pwili  
rahr  
rihng  
rohs  
roahs  
sahl  
sampah  
sele  
sile  
sompihhr  
dahl  
deke  
depwek  
tehk  
teki

tooth  
boar  
nest  
manta ray  
tattoo  
bat  
pumpkin  
pig  
shell  
coral  
ring  
rose  
whale  
rope  
Earth  
hot pepper  
axe  
airplane  
plate  
island  
cloud  
duck  
turkey

tihti

tumwe

wahu

wahn rohs

wahr

wehi

skinny man

nose

valley

flower

canoe

turtle

**Also available in:**

**English**

**Hawaiian**

**Palauan**

**Kosraean**

**Chuukese**

**Marshallese**

**Sāmoan**

**Chamorro**

**Carolinian**